



Step #1: Identify a barrier

Educators should recognize the presence of a barrier, a student's need, in their classroom. Because all classrooms are different, barriers may be present in one setting while not in others, so empowering all educators with this skill set is essential. However, recognizing a barrier is only the start of the process, so...



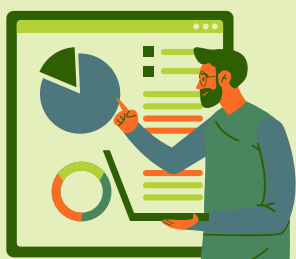
Step #2: Work the learner through their need

...educators and parents need to know how to address the student's barrier(s). We eliminate a need by guiding a process that improves the learner's skills and strategies in areas where they struggle. We do this with well-developed goals, plan explicit need-based instruction for pull-out instructional time, and create unique opportunities to refine and rehearse barrier-related skills and strategies in inclusive environments. But building skills takes time...



Step #3: Support the learner around their need

...so there must be a faster way to move the student's need so they can continue to learn without it being a barrier. This is where accommodations that empower the learner around their need are so important. By making class, instruction, and assessment accessible, just-right accommodations[©] engage the learner in a specially designed and rigorous education! [Accomods](#) by Action Driven Education helps you find the perfect accommodation that is aligned to the learner's need, fits a teacher's unique instructional environment, and uses the student's strengths as leverage.



Step #4: Monitor "through" efforts with instructional data

Effective need-based efforts are verified by collecting instructional data that shows steady progress toward clearly stated outcomes. When a learner's skills are lagging, we must be creative to take full advantage of every opportunity to provide explicit instruction directly aligned with their need. To avoid a loss of valuable instructional time, our laser-focused efforts to improve a student's need-related skills must be verified with data!



Step #5: Verify the effectiveness of "around" efforts

The impact of just-right accommodations[©] should be seen quickly and monitored to verify their ongoing effectiveness. As the learner grows and their skills improve, the variables that define just-right also change. Besides, teachers are busy, so the best way to save the time it takes to provide support is by ensuring it's not being wasted, and data provides that proof!